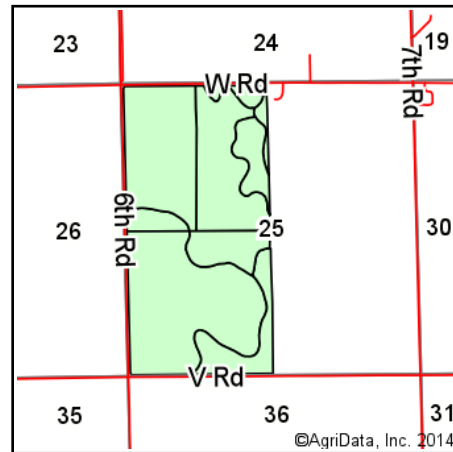
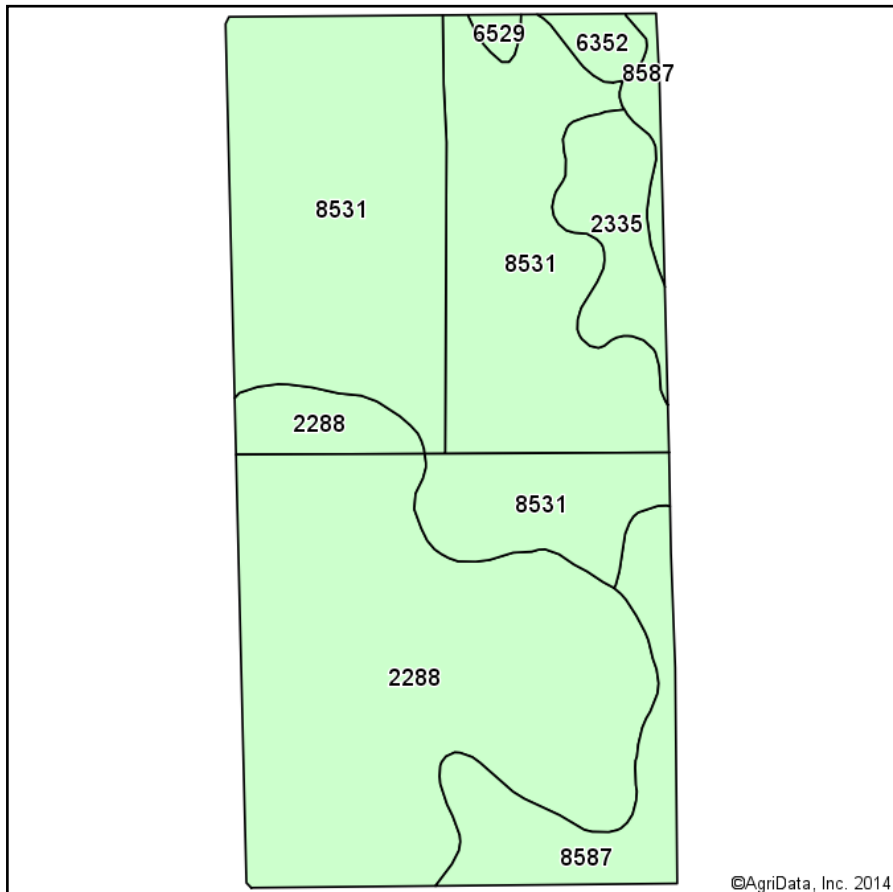
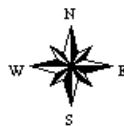


Soil Map



State: **Nebraska**
 County: **Merrick**
 Location: **25-15N-8W**
 Township: **Loup**
 Acres: **310.78**
 Date: **4/2/2014**



Maps Provided By:

 CUSTOMIZED ONLINE MAPPING
 © AgriData, Inc. 2014 www.AgriDataInc.com

Soils data provided by USDA and NRCS.

©AgriData, Inc. 2014

Area Symbol: NE121, Soil Area Version: 13

Code	Soil Description	Acres	Percent of field	Non-Irr Class	Irr Class	SRPG	Alfalfa hay	Alfalfa hay Irrigated	Corn	Corn Irrigated	Grain sorghum	Grain sorghum Irrigated	Soybeans Irrigated	Winter wheat
8531	Novina sandy loam, rarely flooded	143.60	46.2%	Ilw	Ilw	65	3	5.5	60	149	65	115	38	30
2288	Wann loam, occasionally flooded	118.41	38.1%	Ilw	Ilw	49	3.8	6	65	149	88	115	38	37
8587	Wann sandy loam, occasionally flooded	28.41	9.1%	Ilw	Ilw	42	3.6	5.8	68	143	85	110	36	35
2335	Inavale loamy fine sand, 0 to 3 percent slopes	15.06	4.8%	Ive	Ille	35	1.4	3.8		99	30	90		19
6352	Leshara silt loam, occasionally flooded	3.86	1.2%	Ilw	Ilw	65	4.3	5.8	75	143	82	120	38	34
6529	Janude sandy loam, very rarely flooded	1.44	0.5%	Ile	Ile	66	3.4	5.8	75	154	75	120	42	33
Weighted Average						55.4	3.3	5.6	60	146	74.2	113.4	36	32.7

Area Symbol: NE121, Soil Area Version: 13

Field borders provided by Farm Service Agency as of 5/21/2008. Aerial photography provided by Aerial Photography Field Office.